

**Doers Window**  
MANUFACTURING  
4901 Oak Fair Blvd., Tampa, FL 33610

# 4450 Single Hung Window

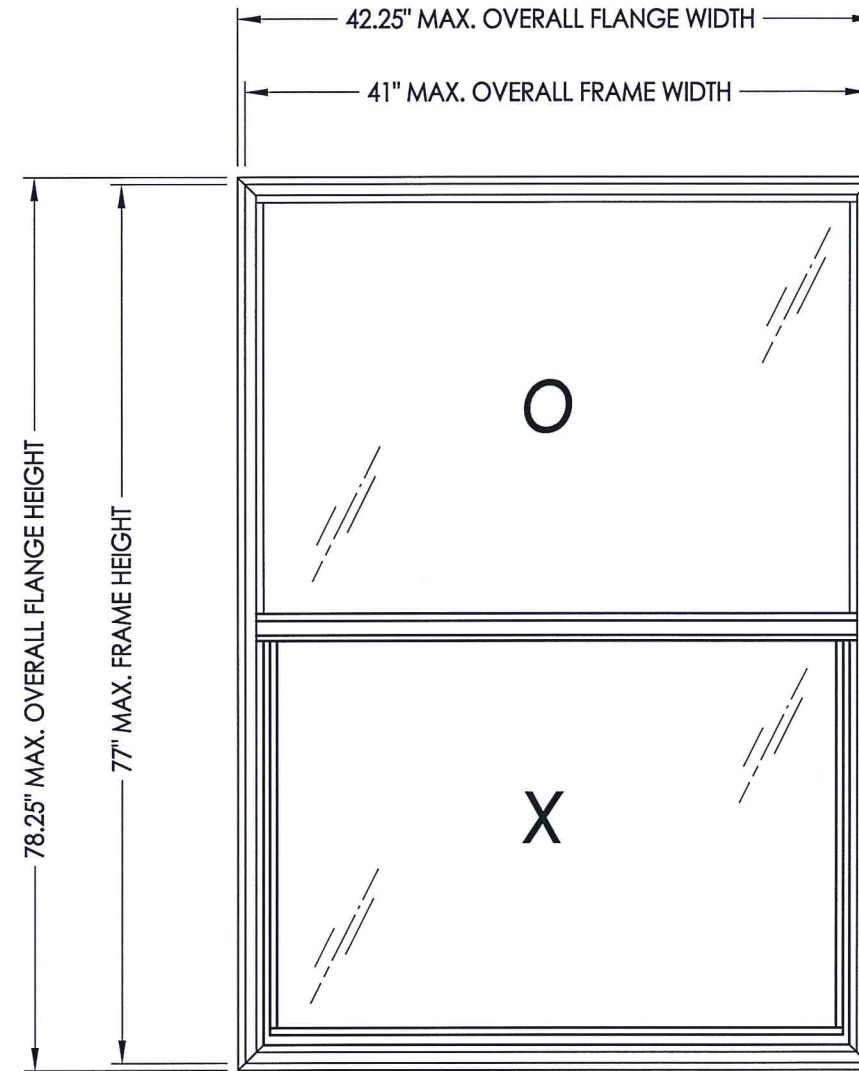
## IMPACT RATED - HVHZ

### w/ Flange

#### GENERAL NOTES

1. This product anchoring drawing has been evaluated and is in compliance with the 5th Edition (2014) Florida Building Code (FBC) including the "High Velocity Hurricane Zone" (HVHZ). See the Certification Agency Certificate for sizes, specifications & ratings.
2. Product anchors shall be as listed and spaced as shown on details. Anchor embedment to base material shall be beyond wall dressing or stucco.
3. When used in the "HVHZ", this product complies with Section 1626 of the Florida Building Code and does not require an impact resistant covering.
4. For 2x stud framing construction, anchoring of these units shall be the same as that shown for 2x buck masonry construction.
5. Site conditions that deviate from the details of this drawing require further engineering analysis by a licensed engineer or registered architect.

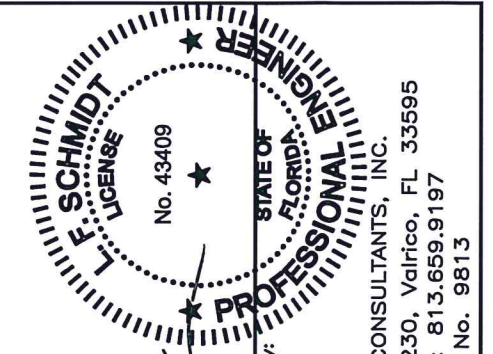
TABLE OF CONTENTS	
SHEET#	DESCRIPTION
1	Typical elevations, design pressures & general notes
2	Vertical & horizontal cross sections
3	Vertical & horizontal cross sections
4	Buck & frame anchoring
5	Bill of materials, glazing details and components



MAX. O.A. FLANGE DIMENSION	MAX. O.A. FRAME DIMENSION	MAX. SASH D.L.O. DIMENSION	MAX. FIXED D.L.O. DIMENSION	GLASS TYPE	DESIGN PRESSURE (PSF)	
					POSITIVE	NEGATIVE
44.25" x 78.25"	41" X 77"	33.5" X 33.25"	36.25" X 35.0"	G1	+40.0	-65.0
44.25" x 78.25"	41" X 77"	33.5" X 33.25"	36.25" X 35.0"	G1	+65.0*	-65.0

\*Requires sill riser

Note: This product is not approved for use above 30 feet in the "HVHZ".



Documents Prepared By:  
Lyndon F. Schmidt  
P.E. No. 43409  
Date: 9.15.15

RW BUILDING CONSULTANTS, INC.  
P.O. Box 230, Valrico, FL 33595  
Phone No.: 813.659.9197  
FBPE C.A. No. 9813

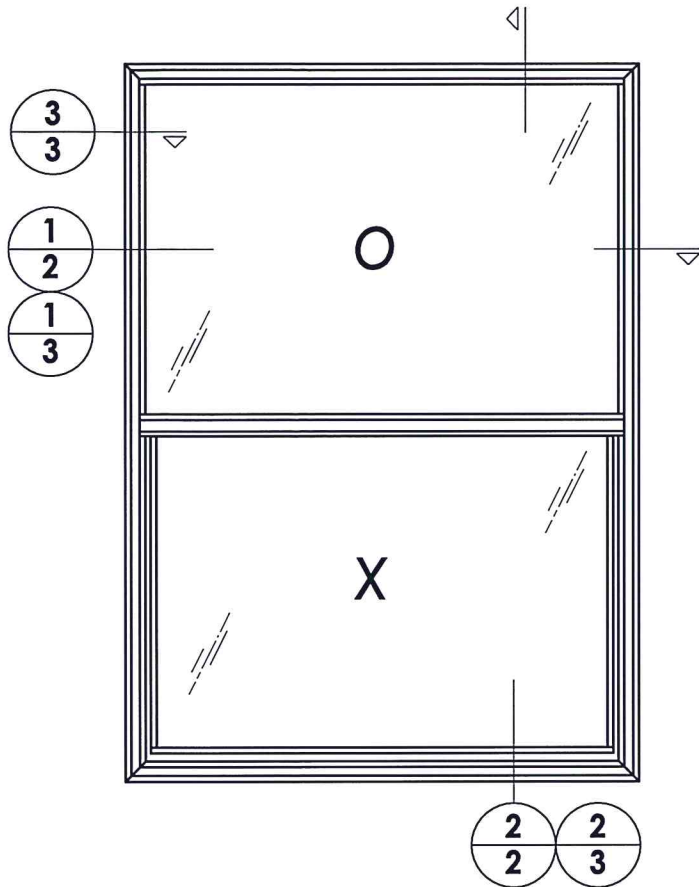
PRODUCT: SINGLE HUNG WINDOW  
PART OR ASSEMBLY: TYPICAL ELEVATION, DESIGN PRESSURES & GENERAL NOTES

NO.	DATE	BY	REVISIONS

DATE: 6/26/15  
SCALE: N.T.S.  
DWG. BY: JK  
CHK. BY: LFS  
DRAWING NO.: FL-16854.12  
SHEET 1 OF 5

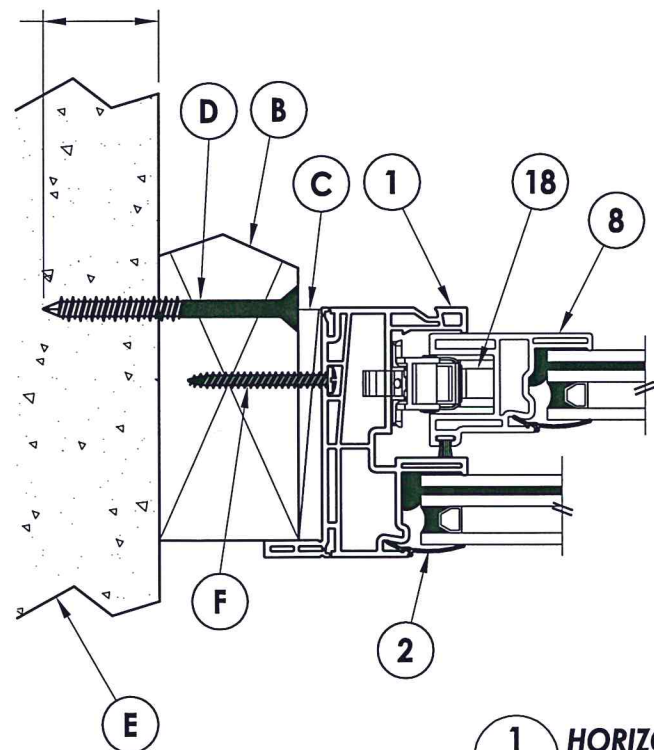


R:\Clients\Doers PERMANENTVA - Florida Product Approvals\FL-16854 Windows - Single Hung\C - Drawings\FL-16854 (2014)\FL-16854.7-14.dwg, 2.5



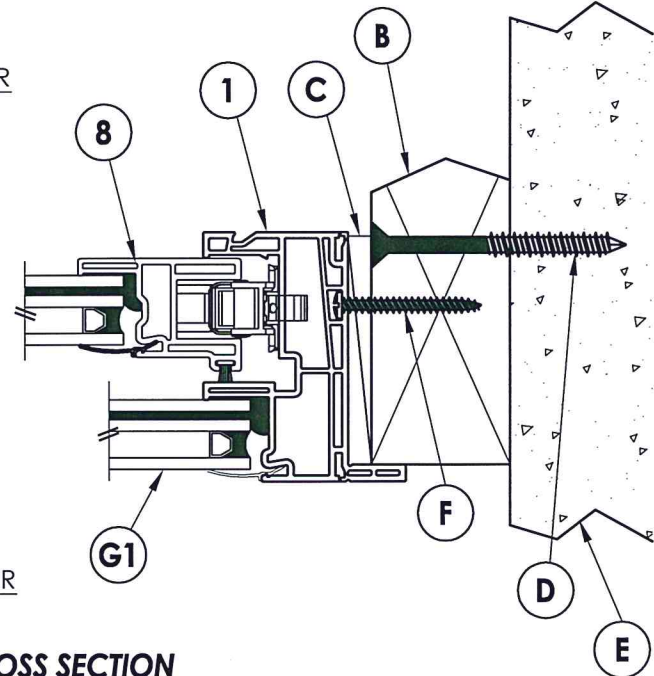
- NOTES:  
 1. Sill interlock clip location: 1 required at centerline along sill.  
 2. Sill riser required when positive design pressure > 40 psf.  
 3. Lock and keeper located 12" from each end of frame jamb.

1-1/4" MIN.  
EMB. (TYP.)



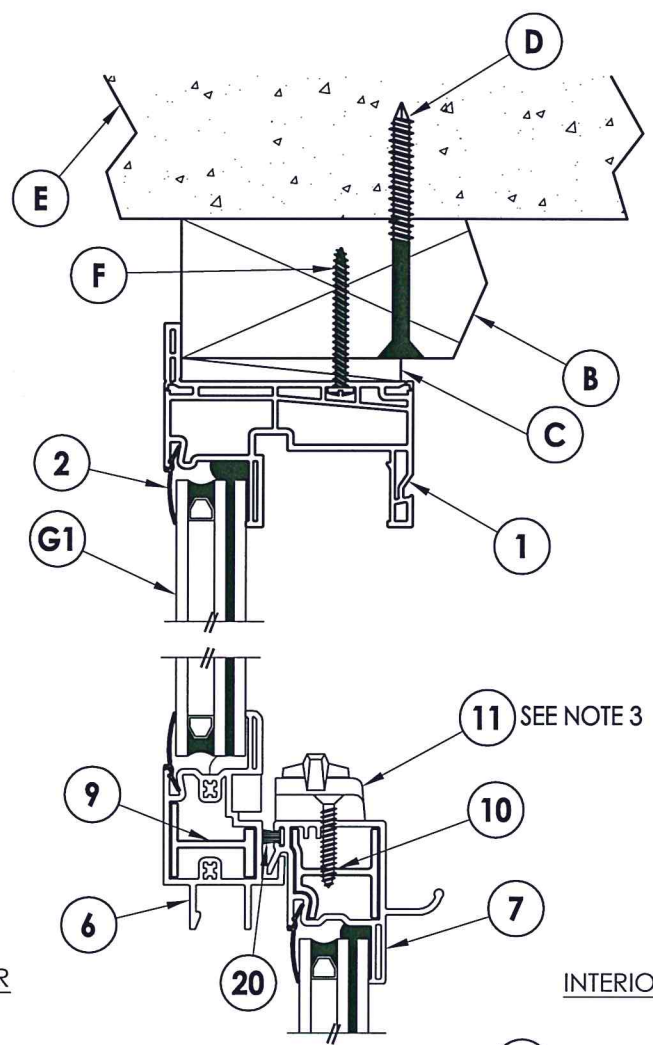
**1 HORIZONTAL CROSS SECTION**  
**2 2X Buck Masonry Construction**

INTERIOR

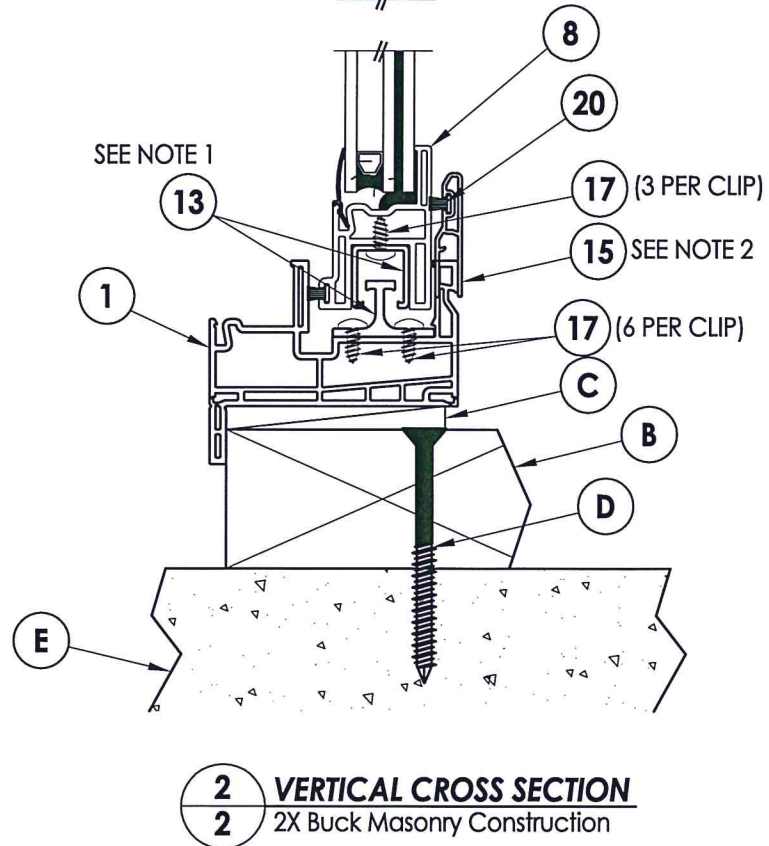


EXTERIOR

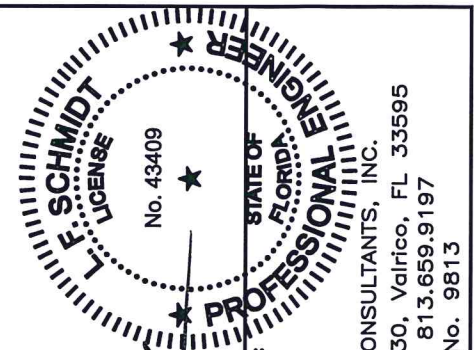
EXTERIOR



INTERIOR



**2 VERTICAL CROSS SECTION**  
**2 2X Buck Masonry Construction**



Documents Prepared By:  
 Lyndon F. Schmidt  
 P.E. No. 43409  
 RW BUILDING CONSULTANTS, INC.  
 P.O. Box 230, Valrico, FL 33595  
 Phone No.: 813.659.9197  
 FBPE C.A. No. 9813

PRODUCT: SINGLE HUNG WINDOW  
 PART OR ASSEMBLY: VERTICAL & HORIZONTAL CROSS SECTIONS

NO.	DATE	BY	REVISIONS

DATE: 6/26/15  
 SCALE: N.T.S.  
 DWG. BY: JK  
 CHK. BY: LFS  
 DRAWING NO.: FL-16854.12  
 SHEET 2 OF 5









